



# Opening Doors for a New Year of Learning

Darien's Reopening Plan  
Update, September 22, 2020



**Darien Board of Education**

# Technology

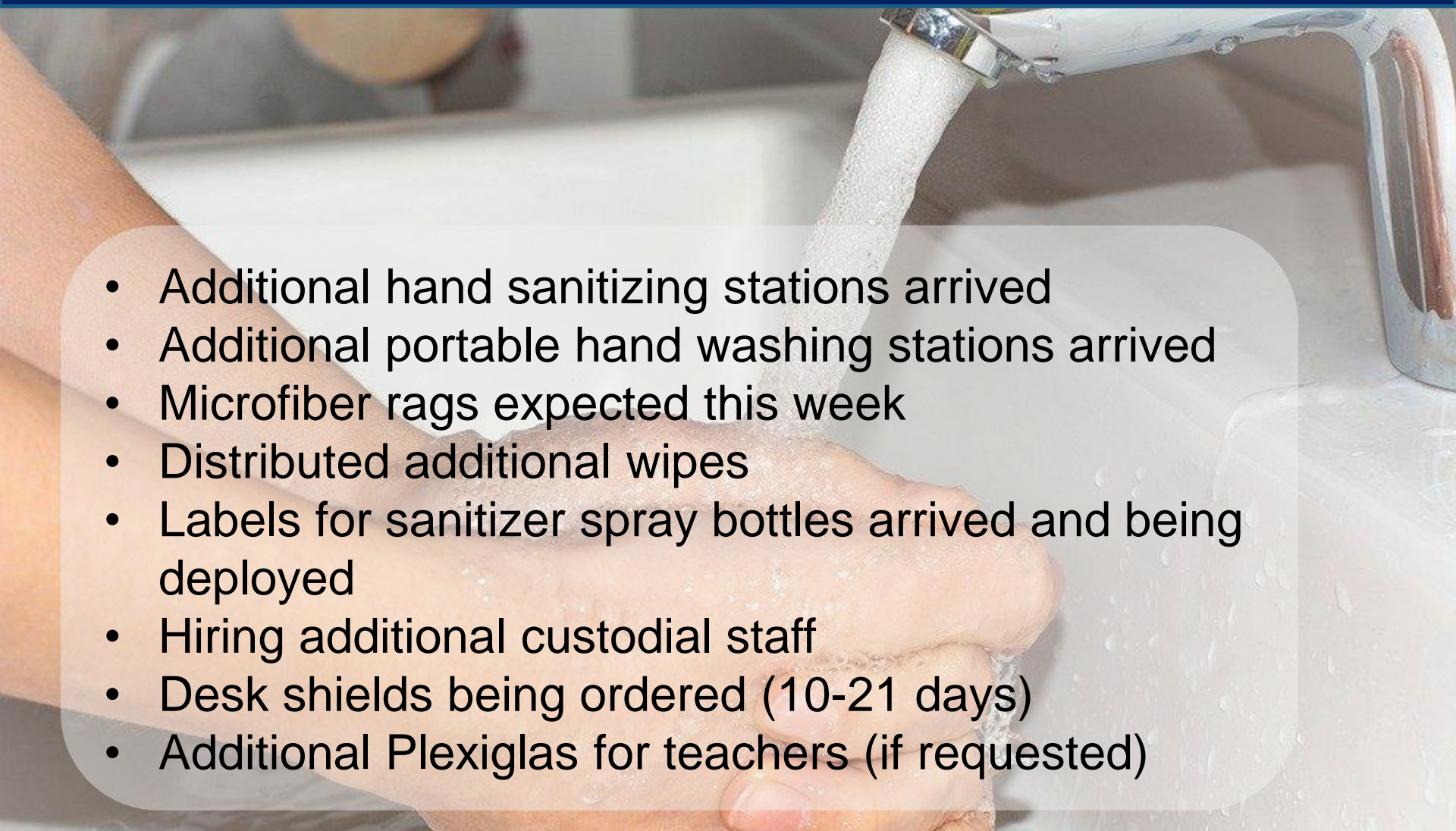
- Approximately hundred spare devices
- Device failure greater than expected but manageable
- The remote users are connecting with few issues
- Filtering system has been tightened to block inappropriate notifications and graphics
- Help desk about 4 times normal rate (200-300 tickets a day). Tickets being addressed.
- Infrastructure performing well
- Will need additional staff
- Support staff in each school in the mornings
- New attendance procedures in place

# Health & Safety

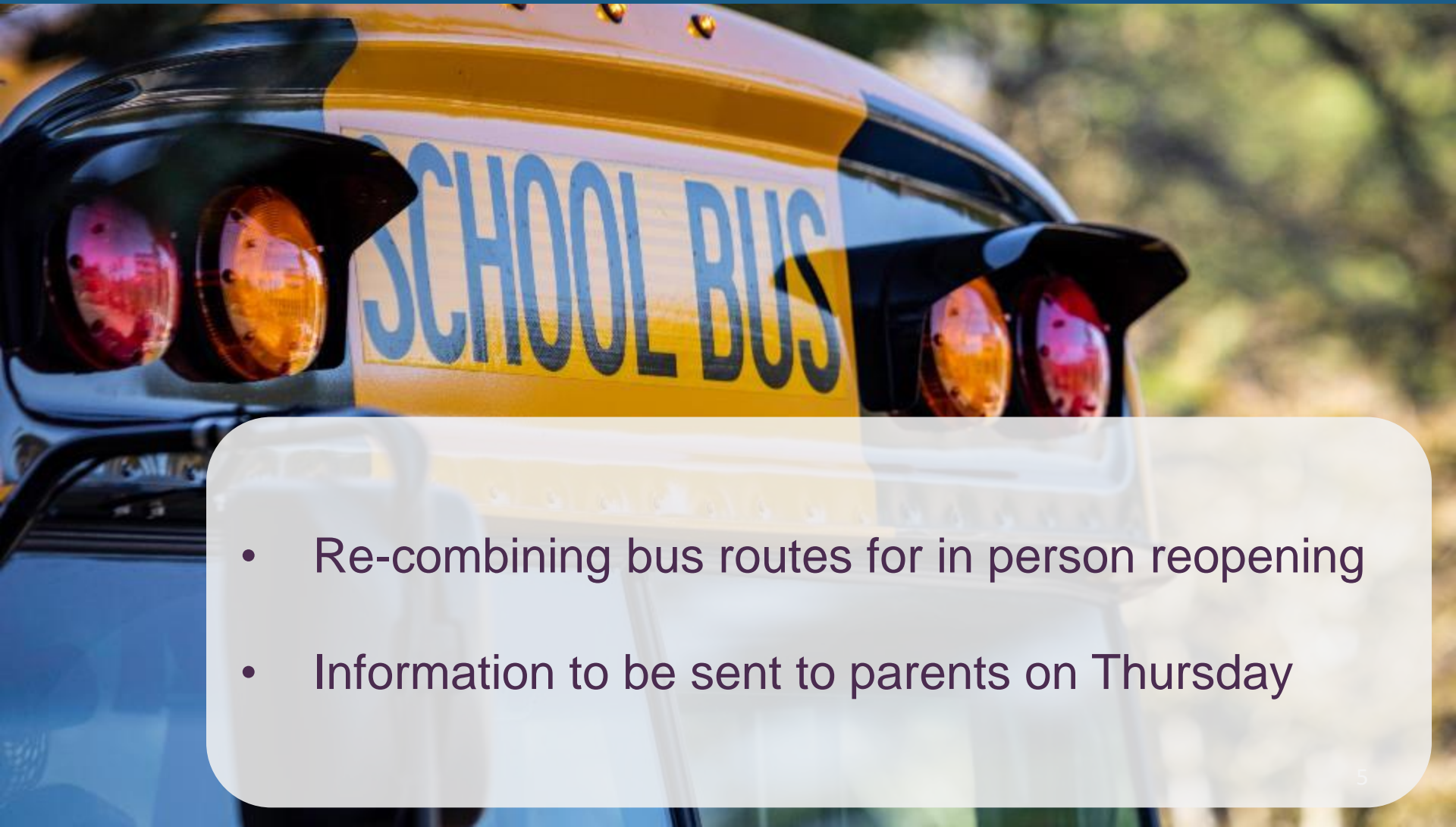
- Schedules prepared for 6 feet of distancing at lunch
- Weekend hotline for reporting COVID cases
- Several staff members quarantined this week at Tokeneke. Negative case.
- Exclusion and contact tracing links updated
- Appreciative of communication from parents, students and staff about illness, travel and exposure to or pending testing for COVID-19.



# Facilities & Hygiene

- 
- Additional hand sanitizing stations arrived
  - Additional portable hand washing stations arrived
  - Microfiber rags expected this week
  - Distributed additional wipes
  - Labels for sanitizer spray bottles arrived and being deployed
  - Hiring additional custodial staff
  - Desk shields being ordered (10-21 days)
  - Additional Plexiglas for teachers (if requested)

# Transportation



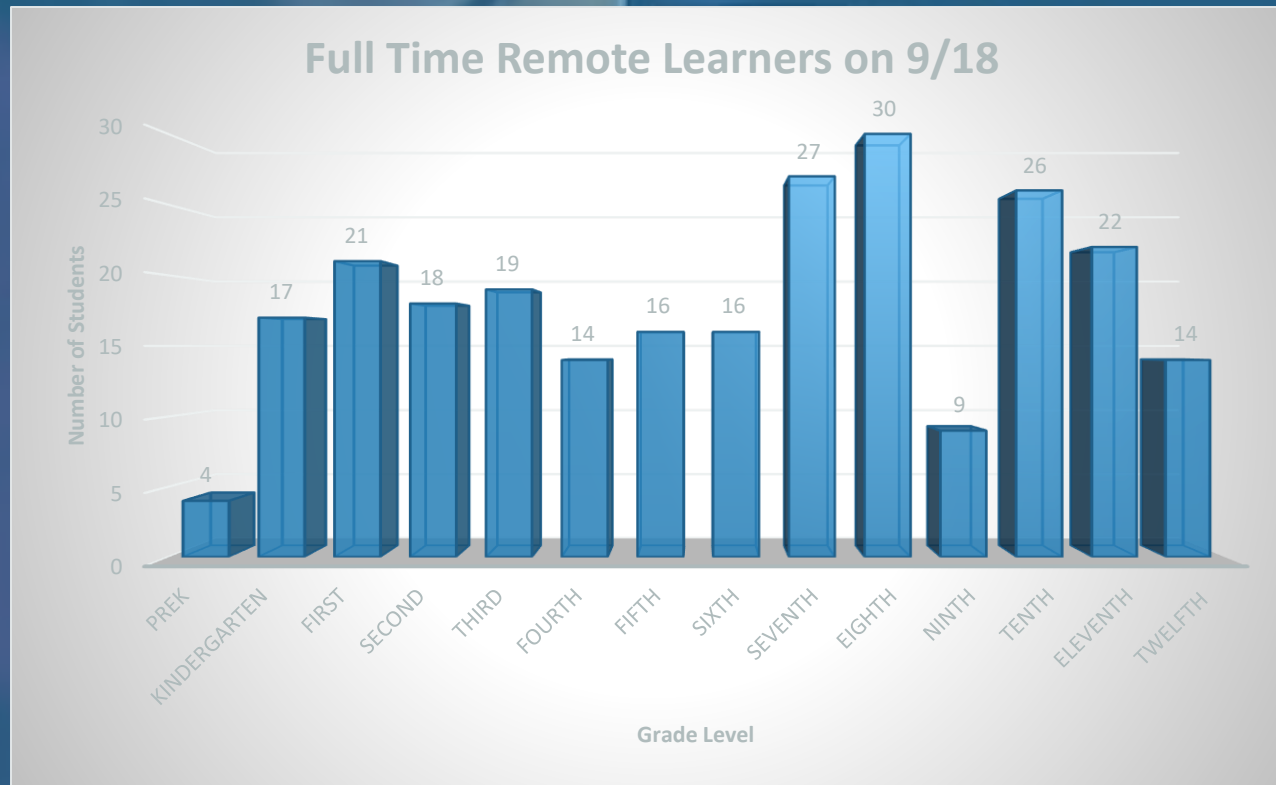
- Re-combining bus routes for in person reopening
- Information to be sent to parents on Thursday



# ELP

- 60 students (25 Special Education, 35 Peer Models). 4 of the 60 students are distance learning.
- New mask wearing requirement as of September 21.
- Enhanced systematic washing of surfaces, materials, and toys.
- Wash bins are available in all ELP classrooms.
- Classrooms equipped with yoga mats. Area rugs have been removed.
- Plush toys, dress up clothes and/or equipment such as sand tables have been removed consistent with Connecticut State Department of Education (CSDE) and the Early Childhood Office (ECO) recommendations
- PPE's available for teachers, staff, and students include: face masks, gowns, gloves, sanitizing wipes and gels, Plexiglass dividers for tables and teacher desks.
- Classrooms and/or related service rooms have been moved into larger spaces where needed.

# Full Remote Learners (253)



# Full Remote Learners

## Direct Live Teaching

Teachers provide direct instruction in identified content areas.

## Independent Practice

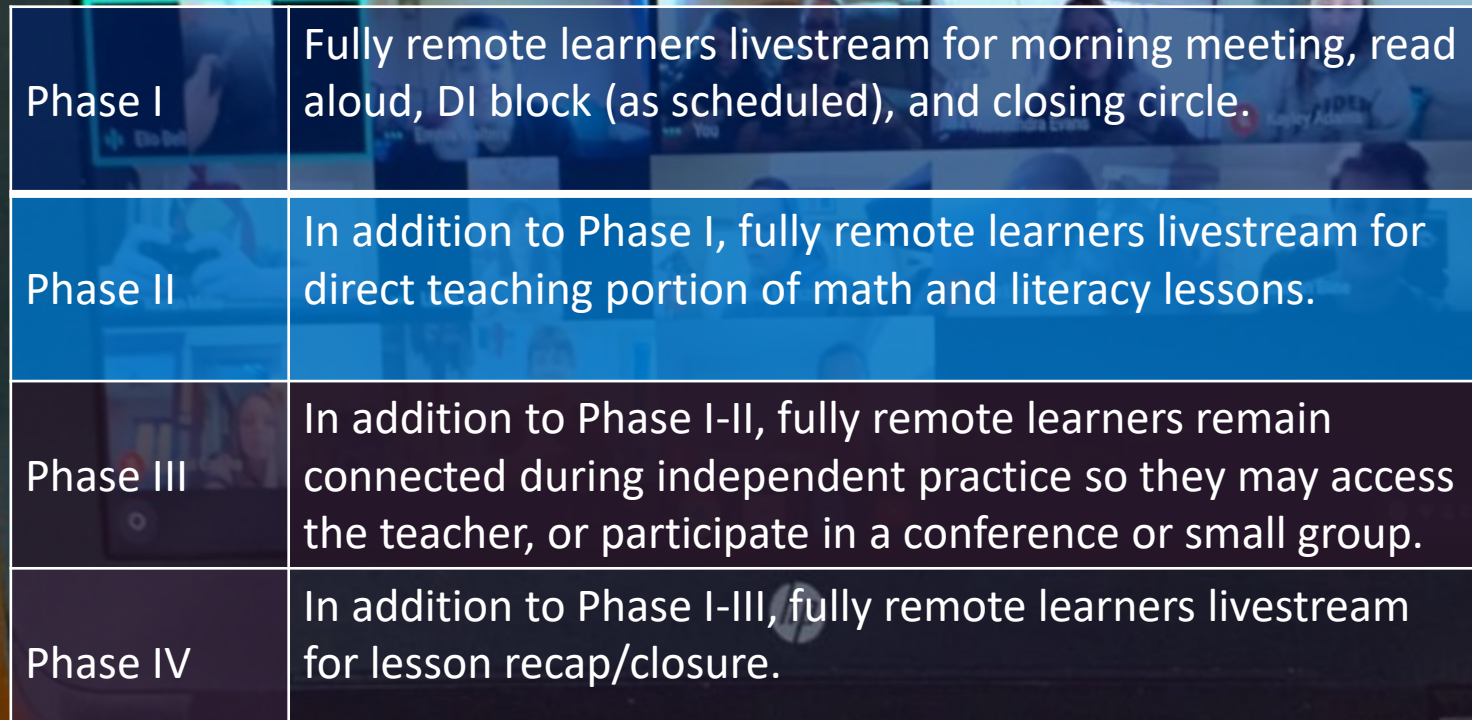
Students work on their own. Camera shares visual reference (anchor chart), mics off, but teacher is there.

## Recap

Teacher facilitates a review and closes lesson with all students.



# Full Remote Learners



Phase I	Fully remote learners livestream for morning meeting, read aloud, DI block (as scheduled), and closing circle.
Phase II	In addition to Phase I, fully remote learners livestream for direct teaching portion of math and literacy lessons.
Phase III	In addition to Phase I-II, fully remote learners remain connected during independent practice so they may access the teacher, or participate in a conference or small group.
Phase IV	In addition to Phase I-III, fully remote learners livestream for lesson recap/closure.

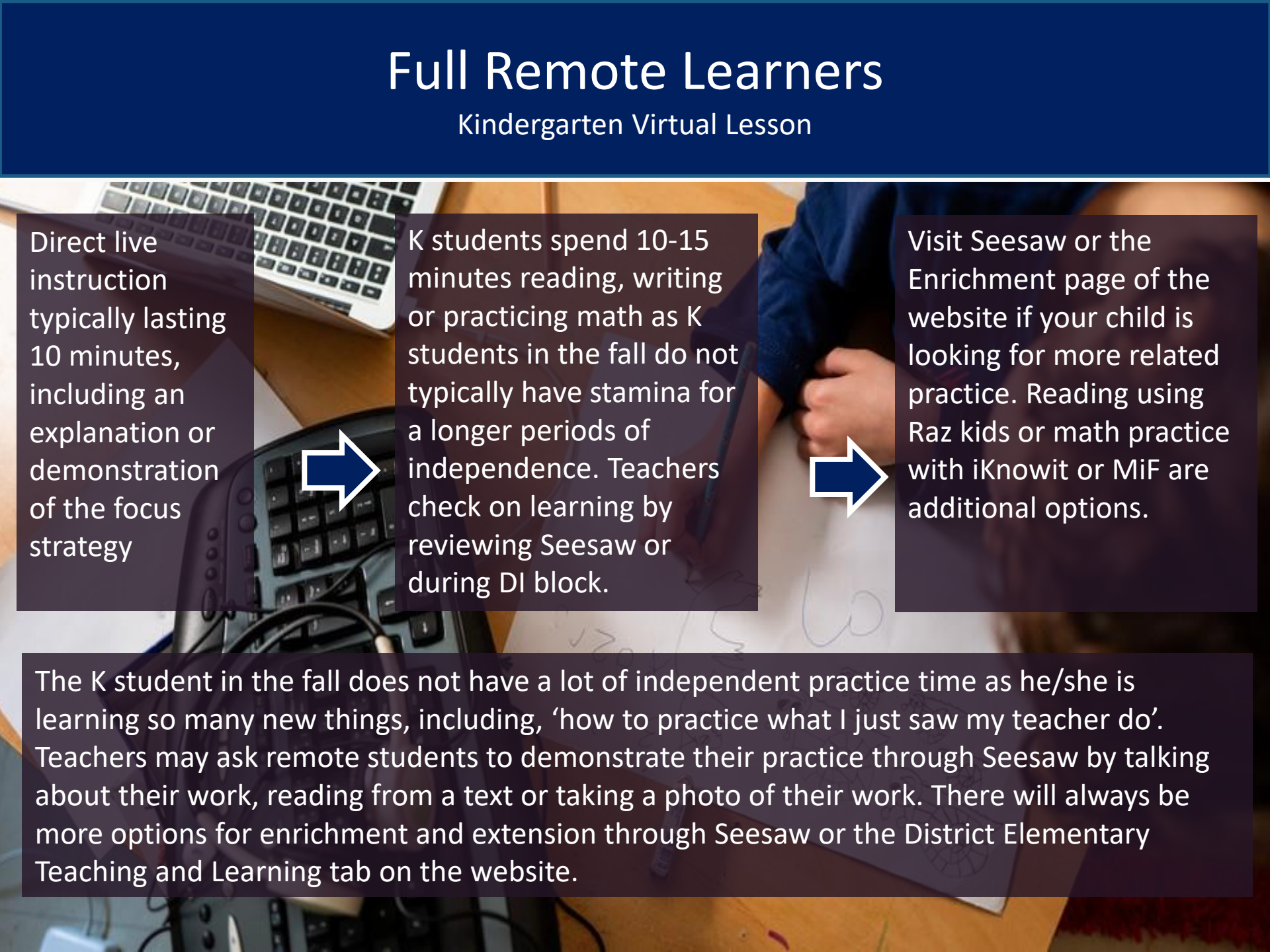
# Full Remote Learners

Phase I	Phase II 9/29	Phase III 10/5	Phase IV 10/12
Morning Meeting / Read Aloud	Morning Meeting / Read Aloud	Morning Meeting / Read Aloud	Morning Meeting / Read Aloud
DI Block (2x per rotation)	DI Block (2x per rotation)	DI Block (2x per rotation)	DI Block (2x per rotation)
Closing Circle	Closing Circle	Closing Circle	Closing Circle
	Reading/Writing/Math Direct Live Teaching	Reading/Writing/Math Direct Live Teaching	Reading/Writing/Math Direct Live Teaching
		Reading/Writing/Math Independent Practice	Reading/Writing/Math Independent Practice
			Reading/Writing/Math Recap



# Full Remote Learners

## Kindergarten Virtual Lesson



Direct live instruction typically lasting 10 minutes, including an explanation or demonstration of the focus strategy



K students spend 10-15 minutes reading, writing or practicing math as K students in the fall do not typically have stamina for a longer periods of independence. Teachers check on learning by reviewing Seesaw or during DI block.



Visit Seesaw or the Enrichment page of the website if your child is looking for more related practice. Reading using Raz kids or math practice with iKnowit or MiF are additional options.

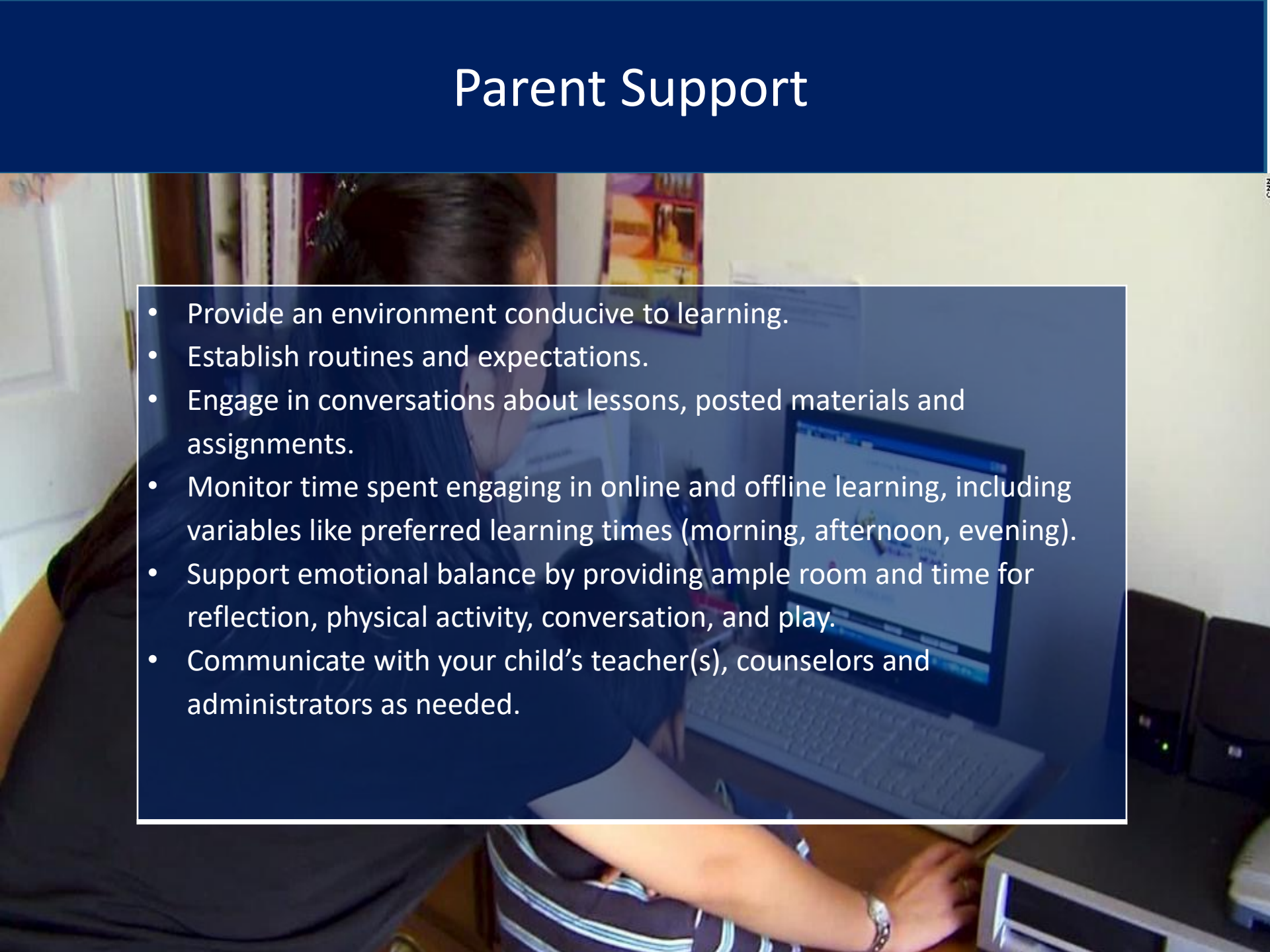
The K student in the fall does not have a lot of independent practice time as he/she is learning so many new things, including, 'how to practice what I just saw my teacher do'. Teachers may ask remote students to demonstrate their practice through Seesaw by talking about their work, reading from a text or taking a photo of their work. There will always be more options for enrichment and extension through Seesaw or the District Elementary Teaching and Learning tab on the website.



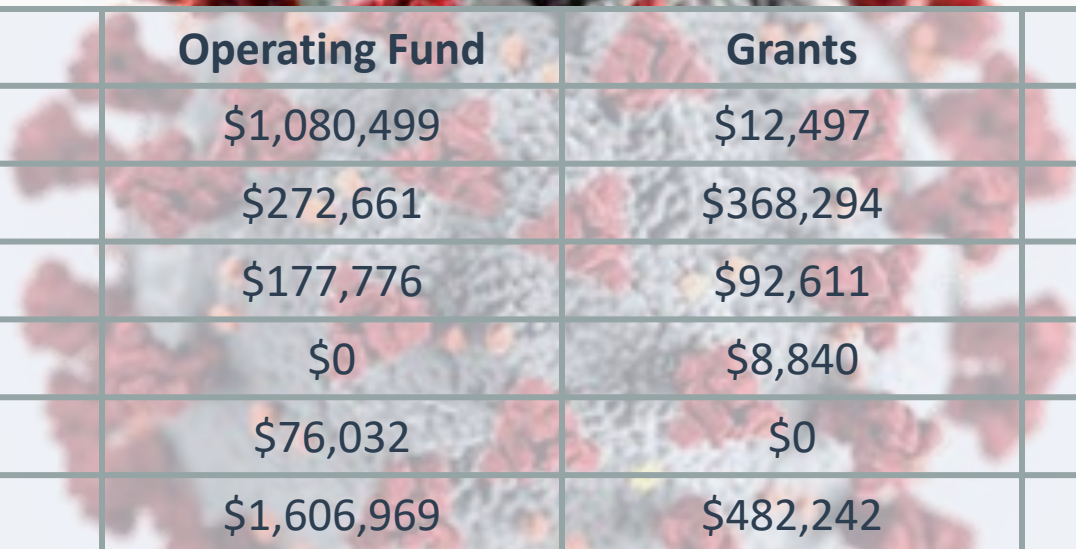
# Full Remote Learners

Content Area / Activity	Sample Schedule	Student Remote School Day “ A day in the life”
Morning Meeting and Read-Aloud	9:00 - 9:30	Sam joins the class through Zoom and engages as an active listener and participant to start the day. Following the morning read-aloud, Sam views live direct instruction for literacy. Following direct instruction Sam has a period of independent work time with a possible teacher conference or small group work. After independent work time, Sam joins the class for the lesson recap. During DI block, Sam participates in independent work, a pre scheduled teacher meeting, or receives additional support services. Next, Sam will experience art, music, PE, or world language asynchronously through posted activities in Seesaw or Google. Sam will have a one hour break for lunch and recess at home. For math class, Sam will sign back into Zoom for direct live instruction, independent work, and a recap similar to literacy. The school day ends with a live closing circle.
Literacy Instruction	9:35 - 11:05	
Differentiated Instructional Block	11:05 - 11:35	
Special	11:35 - 12:20	
Lunch / Recess	12:25 - 1:25	
Mathematics	1:30 - 2:30	
Closing Circle	2:30 - 2:45	

# Parent Support

- 
- Provide an environment conducive to learning.
  - Establish routines and expectations.
  - Engage in conversations about lessons, posted materials and assignments.
  - Monitor time spent engaging in online and offline learning, including variables like preferred learning times (morning, afternoon, evening).
  - Support emotional balance by providing ample room and time for reflection, physical activity, conversation, and play.
  - Communicate with your child's teacher(s), counselors and administrators as needed.

# COVID-19 Related Expenditures



Category	Operating Fund	Grants	Total
Staffing	\$1,080,499	\$12,497	\$1,092,996
Facilities	\$272,661	\$368,294	\$640,955
Technology	\$177,776	\$92,611	\$270,387
Transportation	\$0	\$8,840	\$8,840
Materials	\$76,032	\$0	\$76,032
Total	\$1,606,969	\$482,242	\$2,089,211



# Reopening Schools Metrics

## Indicators for Learning Models

	Leading Indicator	Secondary Indicators		
Risk Level	New COVID-19 Cases (7 days avg. per 100K pop)	Percent Test Positivity	New COVID-19 Hospital Admissions (7 days avg. per 100K pop)	Percent COVID-like illness hospital ED visits
<b>Low</b> (Favors more in-person learning)	<10	Trending down to flat No statistically significant changes		
<b>Moderate</b> (Favors hybrid learning)	10 – 25	Trending flat to upward Any statistically significant changes		
<b>High</b> (Favors remote learning)	>25	Trending upward Consistent statistically significant changes upward		

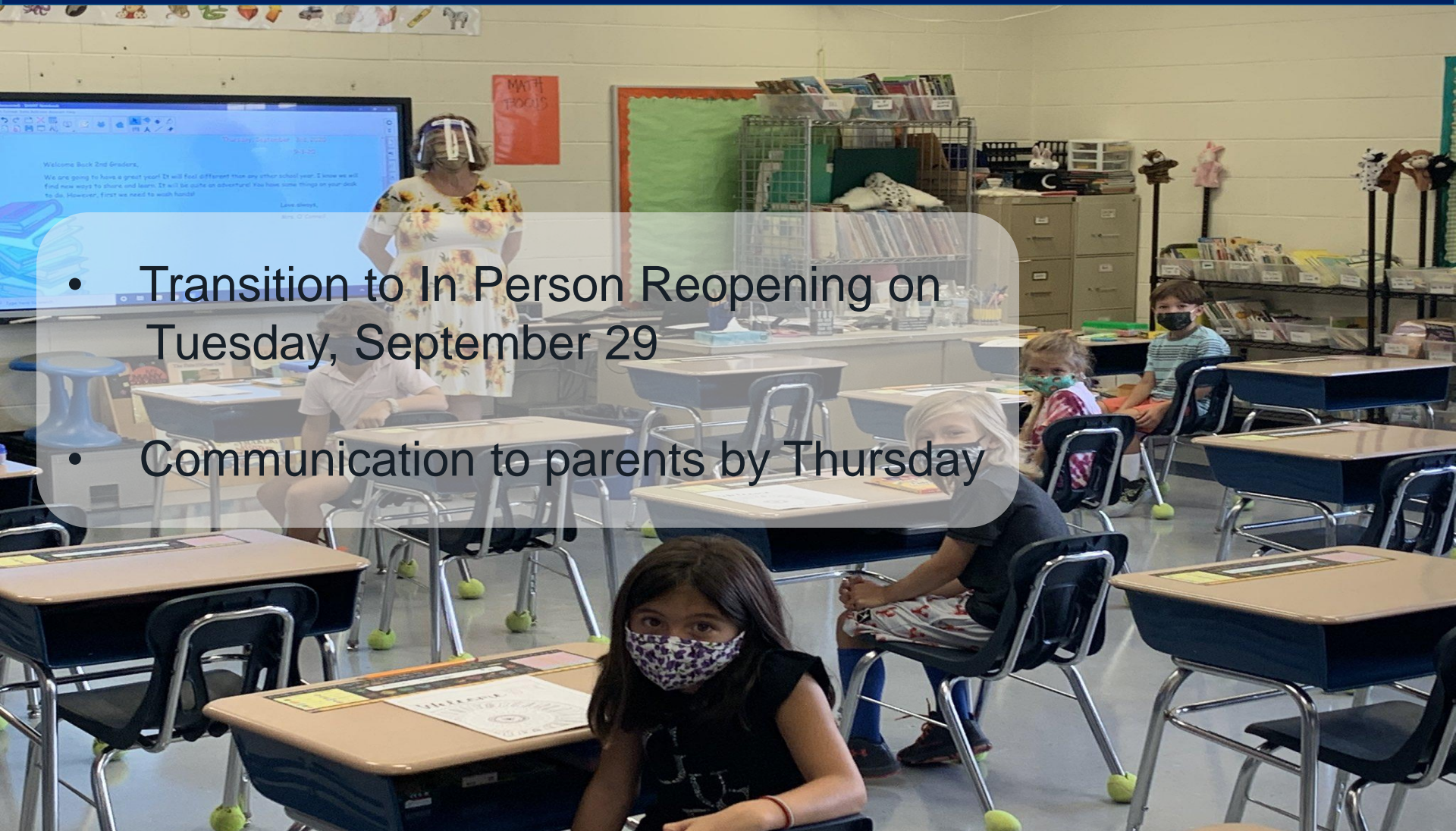
# Reopening Schools Metrics

## Current Status of Indicators by County

	Leading Indicator	Secondary Indicators		
County	New COVID-19 Cases (7 days avg. per 100K pop)	Percent Test Positivity	New COVID-19 Hospital Admissions (7 days avg. per 100K pop)	Percent COVID-like illness hospital ED visits
Connecticut	4.0	1.3%	0.3	1.3%
Fairfield	4.3	2.0%	0.4	1.7%
Hartford	4.6	1.5%	0.4	1.0%
Litchfield	3.5	1.1%	0.3	0.6%
Middlesex	3.1	0.6%	0.3	0.8%
New Haven	2.0	1.0%	0.4	1.7%
New London	2.7	0.8%	0.3	1.1%
Tolland	6.4	1.7%	0.0	1.1%
Windham	6.1	2.3%	0.1	0.6%

# Reopening Status

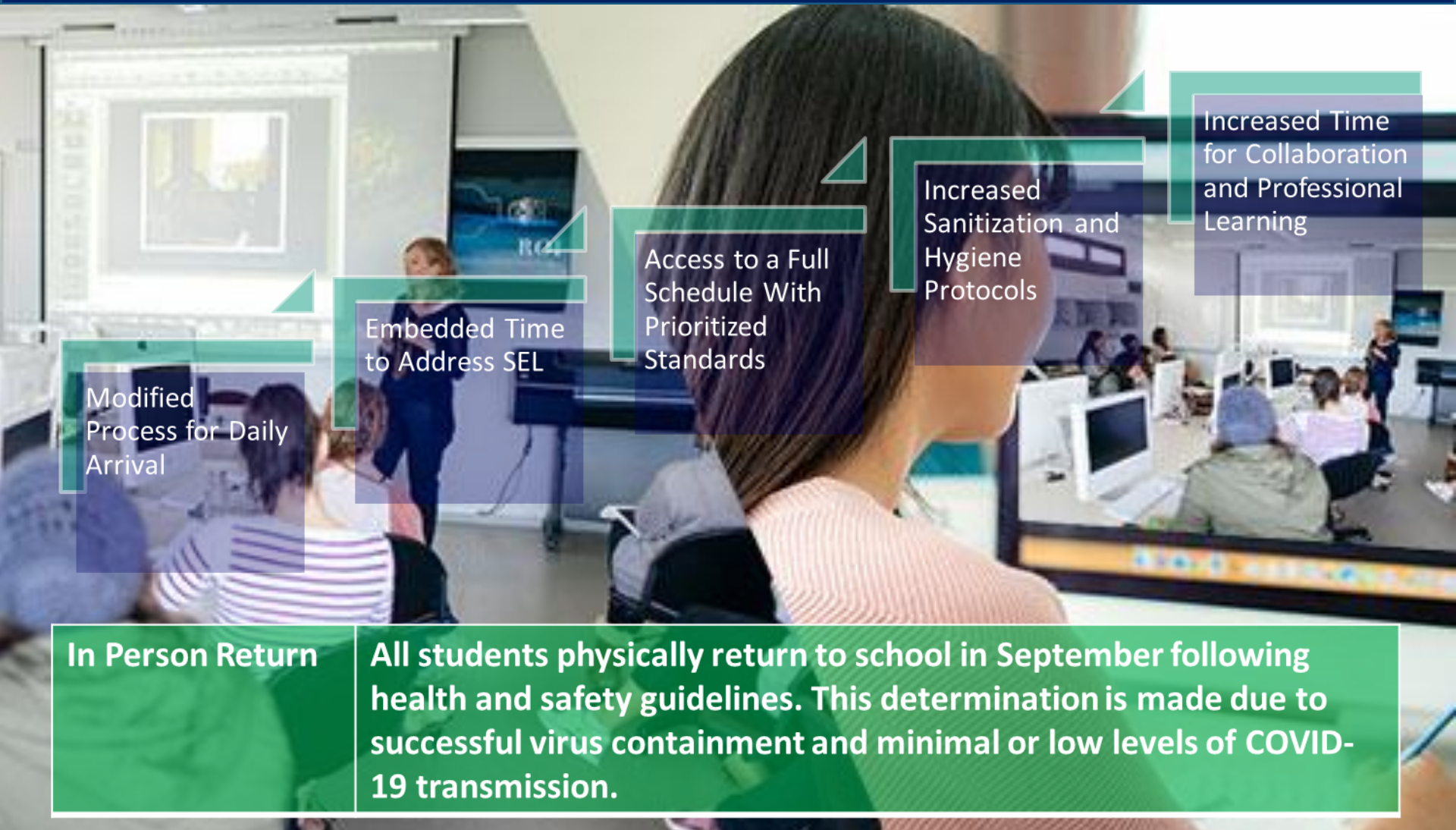
- Transition to In Person Reopening on Tuesday, September 29
- Communication to parents by Thursday





# Transition to In Person Learning

## September 29



Modified  
Process for Daily  
Arrival

Embedded Time  
to Address SEL

Access to a Full  
Schedule With  
Prioritized  
Standards

Increased  
Sanitization and  
Hygiene  
Protocols

Increased Time  
for Collaboration  
and Professional  
Learning

### In Person Return

All students physically return to school in September following health and safety guidelines. This determination is made due to successful virus containment and minimal or low levels of COVID-19 transmission.

# Athletics

- 
- Fall season started
  - CAIC & CSDPH
  - 7v7, club, private 11-11 football

# Questions & Discussion

